



Product Brochure of 15m Medium Assault Craft (MAC)

Presented by **POWERCRAFT**



The GGK Military Assault Craft is High-Speed Landing Craft developed in Malaysia. The purpose mainly for multi-purpose roles for operation, logistic support craft and training requirements such as a platform for training the divers and assault swimmers. The craft is capable of operating at night in extreme weather conditions and swift contaminated water.

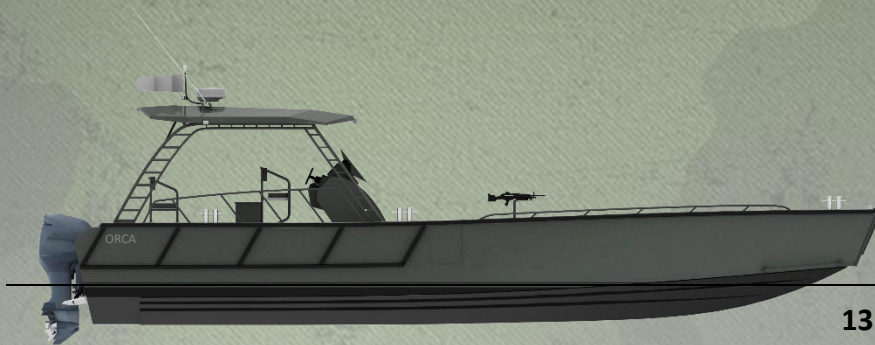
General Specification:

- | | |
|--------------------------|---|
| ▪ Length: | 15.0 mtr |
| ▪ Beam: | 4.18 mtr |
| ▪ Draft: | 0.60 mtr |
| ▪ Crew + Pax: | 7 + 20 Persons |
| ▪ Engine Model: | Mercury |
| ▪ Type of Engine: | Outboard Motor |
| ▪ Engine Power: | 4 x 350 HP |
| ▪ Top Speed: | 45 knots @ Half Load
& No Pax & No Cargo |
| ▪ Operational Speed: | 25 - 30 knots |
| ▪ Construction Material: | Aluminum Alloy |
| ▪ Navigation System: | Garmin / Simrad |
| ▪ Intercom System: | SetCom Wireless |



15m Medium Assault Craft (MAC)

Reference of Proven Hull:



13m High-Speed Landing Craft (Diving)

Address for Physical Inspection:
Rejimen 22 Komando,
Kem Iskandar, 86800,
Mersing, Johor



15m High-Speed Medium Assault Craft

Description:

The development new design of 15m MAC based scaled hull form of proven hull 13m High-Speed Landing Craft (Diving) currently operated by Malaysian Commando or Gerup Gerak Khas.

13m HS LCD

Length:	13.0m
Breadth:	3.4m
Power:	3 x 250hp
Top Speed:	43 kts

15m HS MAC

Length:	15.0m
Breadth:	4.0m
Power:	4 x 350hp
Top Speed:	45 kts

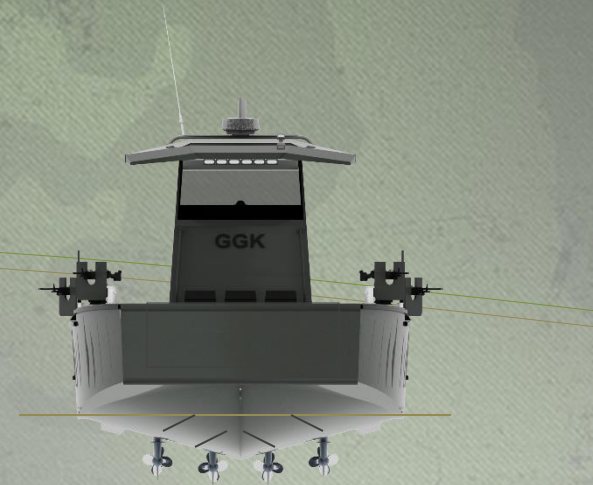


15m Medium Assault Craft (MAC)

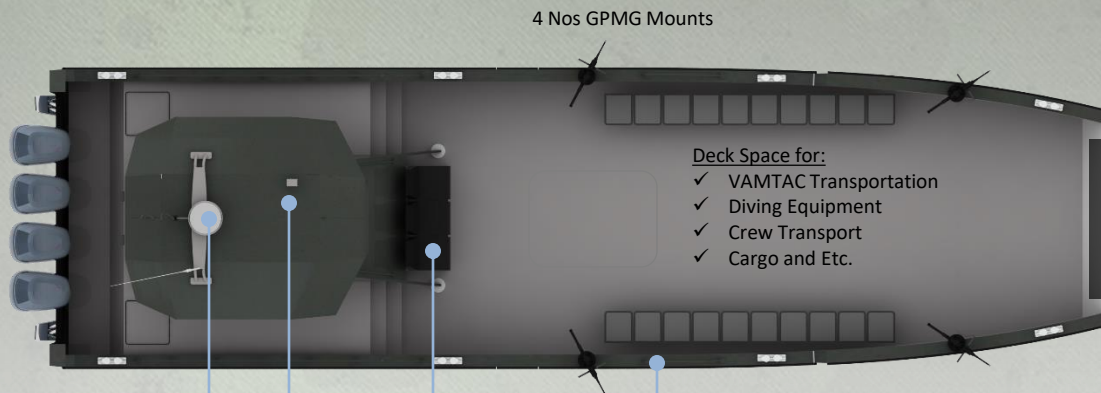
Outboard Profile:



Profile View



Looking Aft



Deck Layout



Looking Fwd

Navigation Searchlight

3 Nos Crew Seats
& 12kVa Genset (Under)

20 Nos Collapsible
Pax Seats & Diving
Tanks (Under)

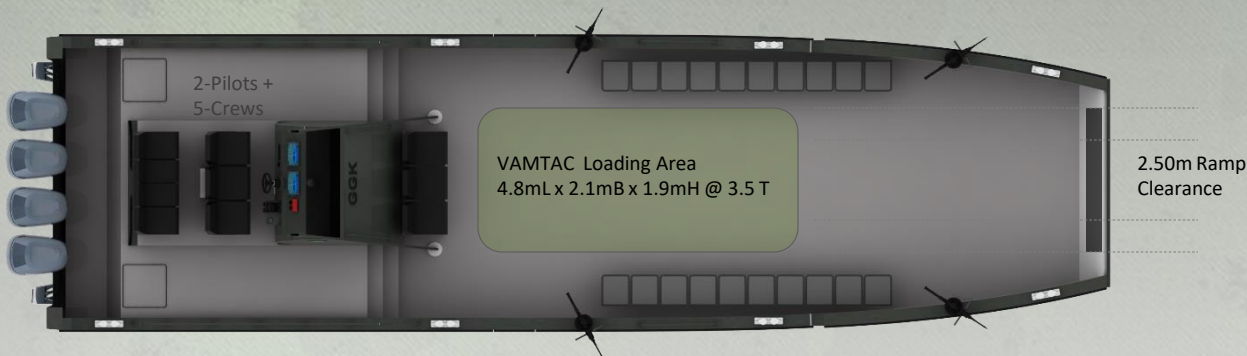


15m Medium Assault Craft (MAC)

Vehicle Transportation Arrangement:



Profile View



Deck Layout

Vehicle's Specifications:

URO VAMTAC High Mobility Tactical Vehicle

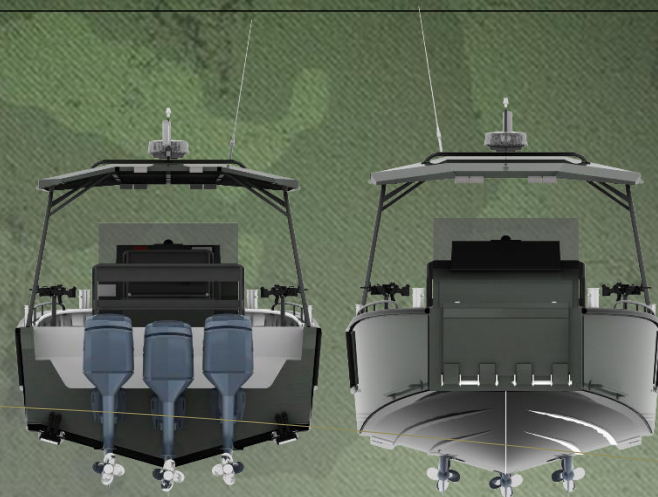
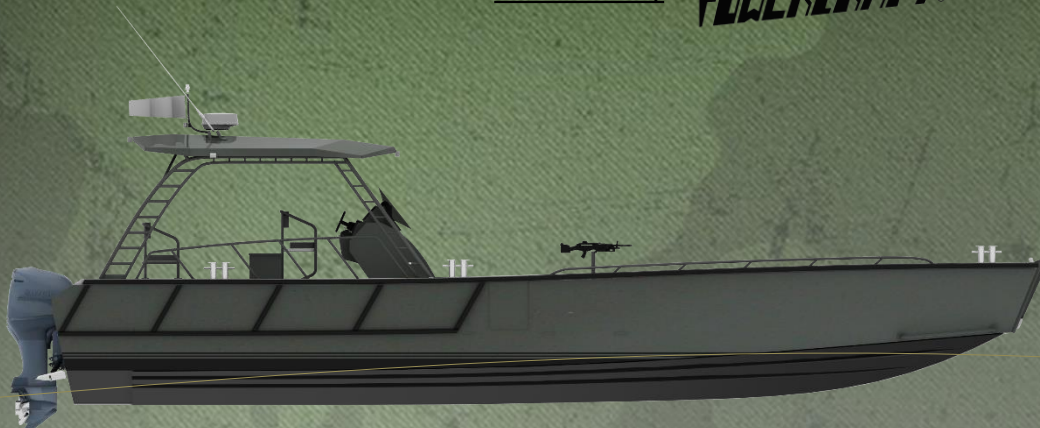
The vehicle has a length of 4.8m, width of 2.1m and height of 1.9m. The curb weight ranges from 3t to 3.5t

Country of origin	Spain
Entered service	1998
Configuration	4x4
Cab seating	1 + 3 men
Dimensions and weight	
Weight	3 - 3.5 t
Maximum load	1.5 - 2.5 t
Length	4.85 / 5.55 m
Width	2.18 m
Height	1.9 m
Mobility	
Engine	Steyr diesel
Engine power	166 / 188 hp
Maximum road speed	126 / 135 km/h
Range	over 600 km
Maneuverability	
Gradient	75%
Side slope	over 40%
Vertical step	~ 0.5 m
Trench	0.5 m
Fording	0.75 m
Fording (with preparation)	up to 1.5 m



13m Landing Craft Diving (LCD)

Presented by **POWERCRAFT**



General Particulars

Length Overall (Hull):	13.0 mtr
Beam (Max):	3.40 mtr
Crew:	2 – 6 Persons
Passenger:	20 Persons
Engine Model:	YAMAHA
Type of Engine:	Outboard Motor – 4 Stroke
Engine Power:	3 x 250 HP
Top Speed:	43 knots @ 5800 rpm
Cruising Speed:	32 knots @ 4500 rpm
Construction:	Aluminum Alloy
Design By:	Powercraft Marine Sdn Bhd

End-User:

1. H.R.H The Sultan of Johor
2. Malaysian KOMANDO
3. H.R.H The Sultan of Johor
4. Pejabat Tanah Daerah, Mersing
5. Perbadanan Taman Negara - TISI

Emails Address:

info@powercraftmarine.com.my
yuni.powercraftmarine@gmail.com
navaltek.group@yahoo.com



SEATRIAL REPORT: 13m Landing Craft (Diving)



13m High-Speed Landing Craft (Diving)

Address for Physical Inspection:

Rejimen 22 Komando,
Kem Iskandar, 86800,
Mersing, Johor



Seatrial # 001

START:	8:59 (29/01/2014)	fr. Muar to. Stulang Laut
FINISH:	2:53 (29/01/2014)	
Duration:	1 hr 56 min	
Total Trip (GPS):	134.5 Nm	
Fuel Capacity Used:	635 Ltrs	
Cruising Speed:	@ Constant 4100/4200 rpm (2728 kts)	

<u>MCR</u>	<u>RPM</u>	<u>Speed (kts)</u>	<u>Flow (L/hr)</u>	<u>Range (NM)</u>	<u>Endurance (hr)</u>
34%	2000	9	38.7	349	38.8
48%	2800	13	69.3	281	21.6
52%	3000	16	75.6	317	19.8
53%	3100	20	78.5	382	19.1
55%	3200	16	82.9	290	18.1
60%	3500	24	94.3	382	15.9
64%	3700	25	110.0	341	13.6
71% Cruise	4100	27	143.0	283	10.5
86%	5000	37	199.6	278	7.5
100% Max	5800	43	270.2	239	5.6

Note: Performance subject to current, wave and wind

Performance declared at constant MCR (%)

<u>MCR</u>	<u>RPM</u>	<u>Speed (kts)</u>	<u>Flow (L/hr)</u>	<u>Range (NM)</u>	<u>Endurance (hr)</u>
65%	3770	25	110	340	13.6
70%	4060	27	143	280	10.5
85%	5000	35	199	260	7.5