



P O W E R C R A F T M A R I N E S D N B H D

COBRA

Military Airboat

Presented by

Powercraft Marine Sdn Bhd. Address: No. 2770-B Jln Changkat Permata, Taman Permata
53300 Kuala Lumpur Website: www.powercraftmarine.com.my Email:
yuni.powercraftmarine@gmail.com

Rev A. 12/01/2021 – Preliminary



P O W E R C R A F T M A R I N E S D N B H D

COBRA Military Airboat

Introduction & Specification



The COBRA Military Airboat is military airboat developed in Malaysia.
The purpose mainly for river patrol, anti-terrorism and anti-piracy.

Manufacture by:

Powercraft Marine Sdn Bhd. Address: No. 2770-B Jln Changkat Permata, Taman Permata
53300 Kuala Lumpur Website: www.powercraftmarine.com.my Email: info@powercraftmarine.com.my



P O W E R C R A F T M A R I N E S D N B H D

COBRA Military Airboat

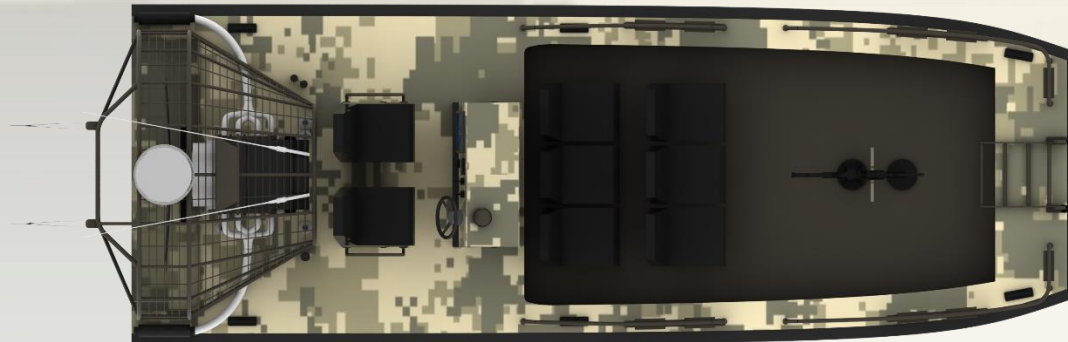
Layout:



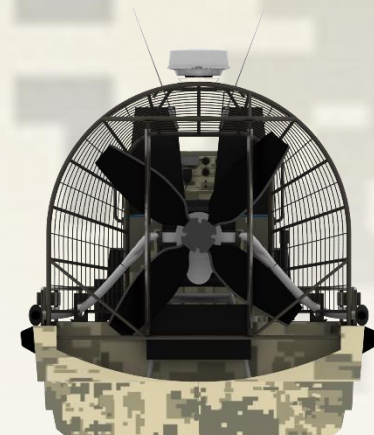
Profile View



Looking Aft



Deck Layout



Looking Fwd

Manufacture by:

Powercraft Marine Sdn Bhd. Address: No. 2770-B Jln Changkat Permata, Taman Permata
53300 Kuala Lumpur Website: www.powercraftmarine.com.my Email: info@powercraftmarine.com.my



COBRA Military Airboat

No	Particular	COBRA
01 02 03	Category Top Design Hull Bottom Design	Military Open Convex / Flat
04 05 06	Airboat Length Airboat Height Airboat Beam	7.50 m (Hull) 3.00 m 2.70 m
07 08 09	Main Engine* Power Top Speed	LSA 6.2L SuperCharged 550 hp @ 5800 RPM >30 knots (GPS)
10 11 12	Propeller Type Propeller Rotation Propeller Material	WWP's Whisper Tip EX 4 bladed Carbon Fibre
13 14 15	Complement NavCom Hull Materials	2+ 6 Officers GARMIN / SIMRAD Alum. Alloy

*Main Engine Subject to availability and may replace as equivalent.

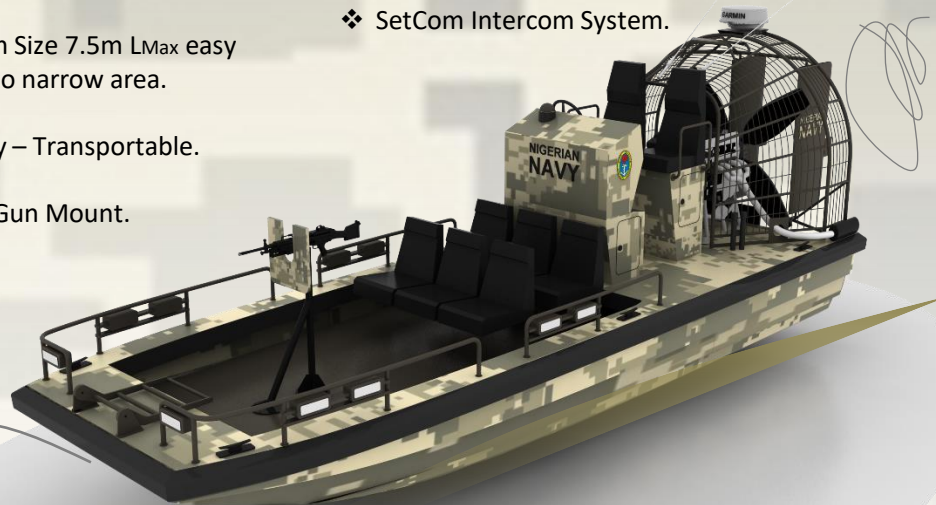
*Logo and Paint subject to final specs by end-user.

Features:

- ❖ Marine Grade Aluminium.
- ❖ Hi-Stability.
- ❖ Could Running at mud.
- ❖ Fuel Saving – Endurance achieve >5 Hrs of patrolling @ Economical Speed.
- ❖ Medium Size 7.5m L_{Max} easy access to narrow area.
- ❖ Mobility – Transportable.
- ❖ GPMG Gun Mount.

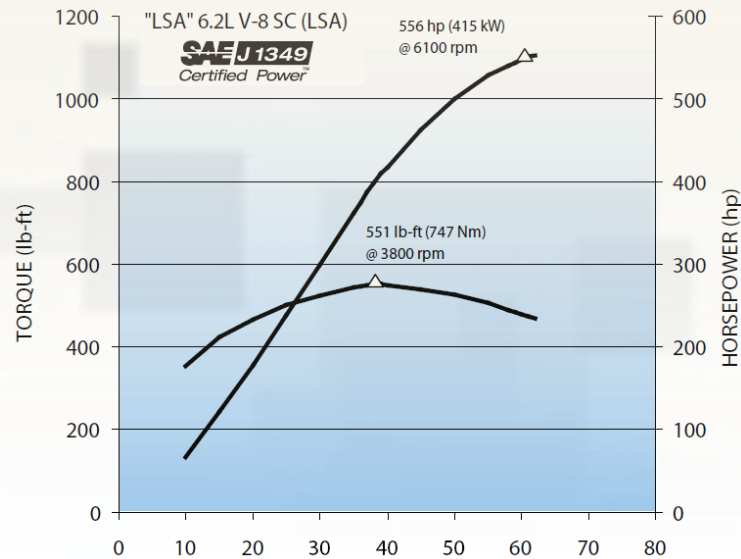
NavCom:

- ❖ Garmin or Simrad Radar complete with 10" GPS Display
- ❖ VHF Radio c/w Antenna
- ❖ Ritchie Compass
- ❖ Navigation, Warnings Lights
- ❖ SetCom Intercom System.



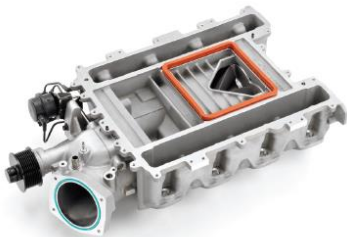


COBRA Military Airboat

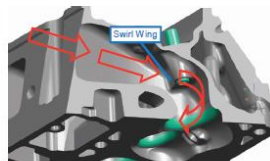


Main Engine:

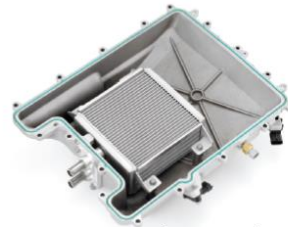
- ❖ LSA 6.2L SuperCharged
- ❖ 550hp@ 5800rpm
- ❖ Full Airboat Marinization To Survive The Harshest Of Environments
- ❖ Eaton Supercharged To Supply Unmatched Low End Torque
- ❖ Aluminum Block And High Flow Heads For Optimal Weight Reduction
- ❖ Latest In Engine Management Hardware and Custom Calibrated Software



Supercharger Assembly
High efficiency, low noise front-drive supercharger assembly with throttle inlet adapter



Swirl Wing Cylinder Head
Cast aluminum cylinder head with wing in inlet port to induce combustion chamber swirl



Charge Air Cooler Assembly
Integrated single brick tube and fin charge air cooler with rear coolant entry (requires closed cooling)



Manufactured by:

P O W E R C R A F T M A R I N E S D N B H D

Registration No: 1183854-K

Main Office & Business Address:

No. 2770-B Jalan Changkat Permata
Taman Permata, 53300 Kuala Lumpur

Mobile:

+601.999.00.555

+601.975.18.171

Website:

www.powercraftmarine.com.my

Emails Address:

yuni.powercraftmarine@gmail.com